

For Sale

Skytop Professional Plaza

1804 OAKLEY SEAVER DRIVE, CLERMONT, FL 34711



BUILDING DATA

Total Building SF: 2,509 SF

Year Built: 2004

Zoning: PO

Parking Ratio: 5.0

LISTING DATA

Available SF: Suite F - 2,509 SF

Comments: Space is walk-in ready with direct parking lot access and a parking ratio of 5/1,000 SF.

Conveniently located on the corner of Oakley Seaver Drive and Citrus Tower Blvd directly across the street from South Lake Hospital.

ECONOMIC DATA

Sale Price: \$539,435



1017 E. SOUTH STREET
ORLANDO, FL 32801

For more information contact:

Jason Bantel, CCIM

jbantel@lee-associates.com

D: 321.281.8509

We obtained the information above from sources we believe to be reliable. However, we have not verified its accuracy and make no guarantee, warranty or representation about it. It is submitted subject to the possibility of errors, omissions, change of price, rental or other conditions, prior sale, lease or financing, or withdrawal without notice. We include projections, opinions, assumptions or estimates for example only, and they may not represent current or future performance of the property. You and your tax and legal advisors should conduct your own investigation of the property and transaction.

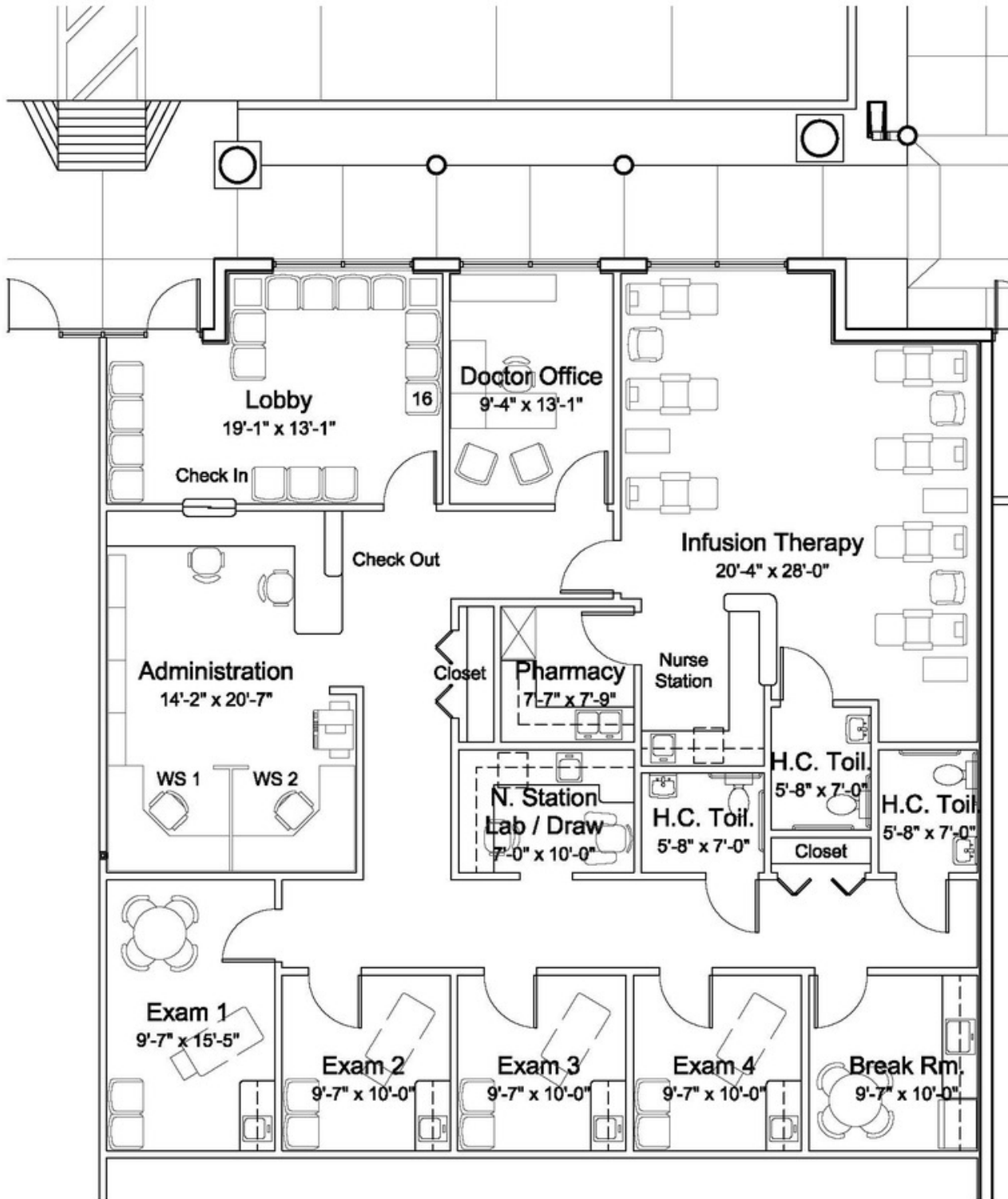
LeeCFL.com



P: 321.281.8500

For Sale

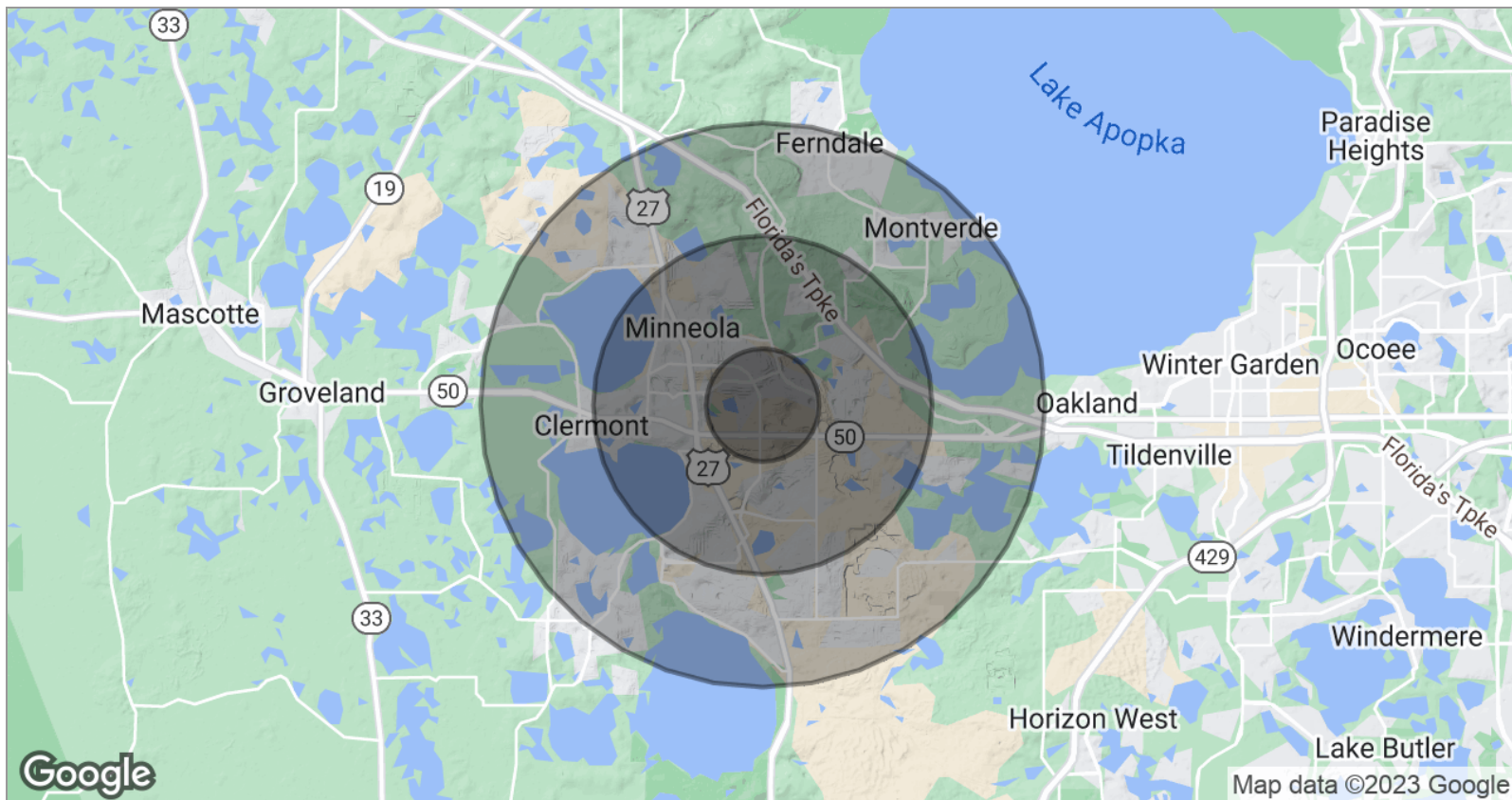
Skytop Professional Plaza
1804 OAKLEY SEAVER DRIVE, CLERMONT, FL 34711



For Sale

Skytop Professional Plaza

1804 OAKLEY SEAVER DRIVE, CLERMONT, FL 34711



POPULATION

	1 MILE	3 MILES	5 MILES
TOTAL POPULATION	4,589	30,300	60,559
MEDIAN AGE	39.2	38.5	38.7
MEDIAN AGE (MALE)	36.0	36.2	37.2
MEDIAN AGE (FEMALE)	41.2	39.8	39.4

HOUSEHOLDS & INCOME

	1 MILE	3 MILES	5 MILES
TOTAL HOUSEHOLDS	1,598	10,696	21,316
# OF PERSONS PER HH	2.9	2.8	2.8
AVERAGE HH INCOME	\$73,184	\$71,717	\$74,484
AVERAGE HOUSE VALUE		\$300,623	\$308,071

RACE

	1 MILE	3 MILES	5 MILES
% WHITE	75.8%	75.8%	77.5%
% BLACK	11.1%	11.7%	10.8%
% ASIAN	3.1%	3.1%	3.1%
% HAWAIIAN	0.0%	0.1%	0.2%
% INDIAN	0.1%	0.3%	0.5%
% OTHER	7.0%	6.0%	5.2%

ETHNICITY

	1 MILE	3 MILES	5 MILES
% HISPANIC	20.1%	18.3%	17.0%

* Demographic data derived from 2020 ACS - US Census



COMMERCIAL REAL ESTATE SERVICES

1017 E. SOUTH STREET
ORLANDO, FL 32801

For more information contact:

Jason Bantel, CCIM

jbantel@lee-associates.com

D: 321.281.8509

We obtained the information above from sources we believe to be reliable. However, we have not verified its accuracy and make no guarantee, warranty or representation about it. It is submitted subject to the possibility of errors, omissions, change of price, rental or other conditions, prior sale, lease or financing, or withdrawal without notice. We include projections, opinions, assumptions or estimates for example only, and they may not represent current or future performance of the property. You and your tax and legal advisors should conduct your own investigation of the property and transaction.

LeeCFL.com



P: 321.281.8500